

# Replacing the battery pack on a BII Wireless probe

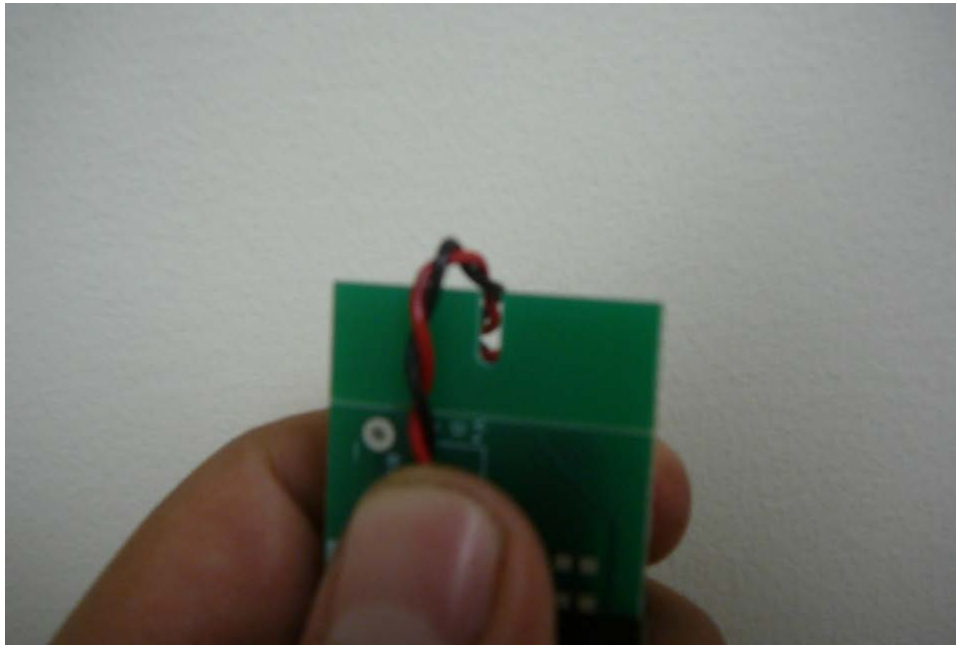
1. Use a small Phillips screwdriver to remove the small screw securing the cap to the probe



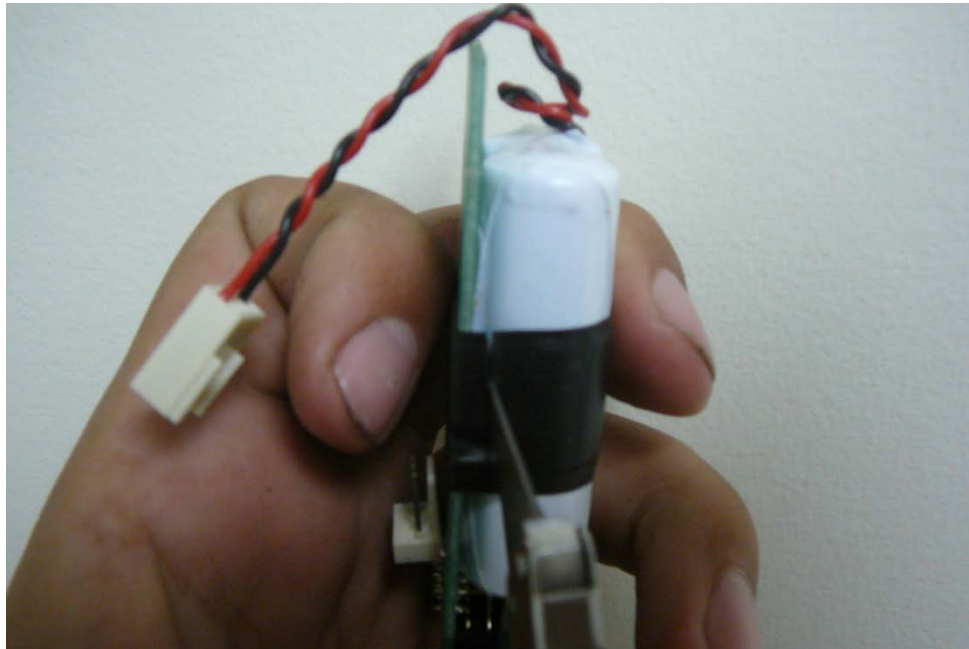
2. Remove the cap to expose the circuit board and battery pack. Carefully pull straight upward to remove the circuit board from the probe.



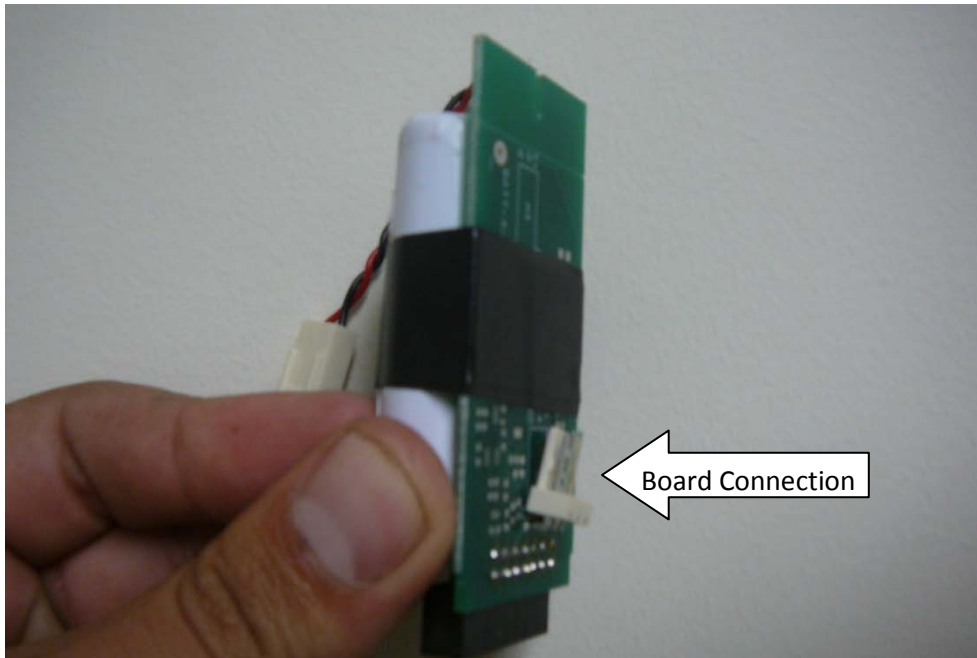
3. Disconnect the battery from the board and carefully remove the wires from the slot in the top of the circuit board.



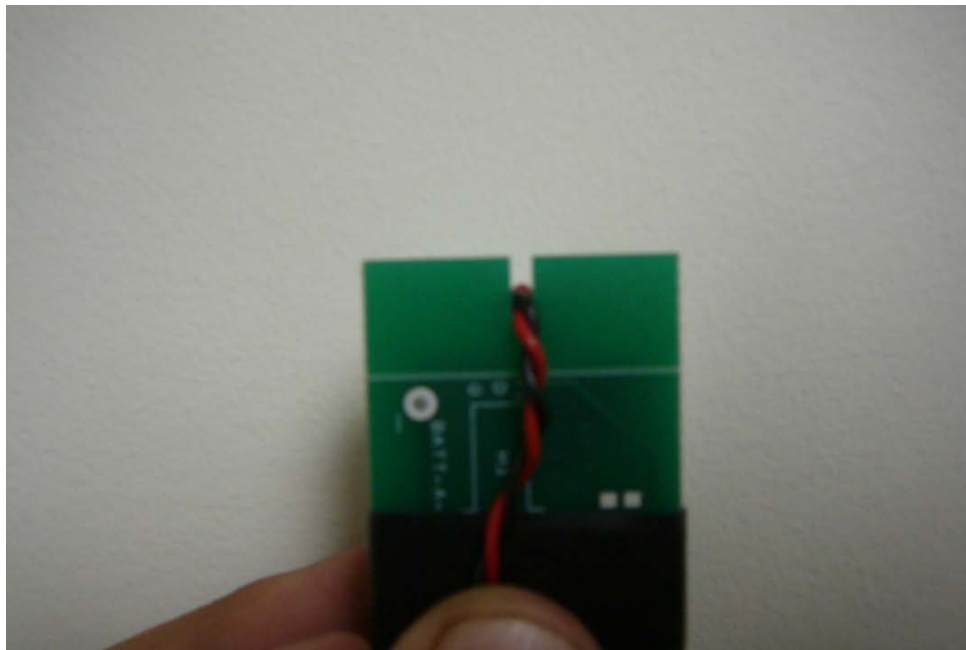
4. Using a sharp knife, cut the tape securing the battery pack to the board. Once this tape is gone the battery pack should be free of the board.



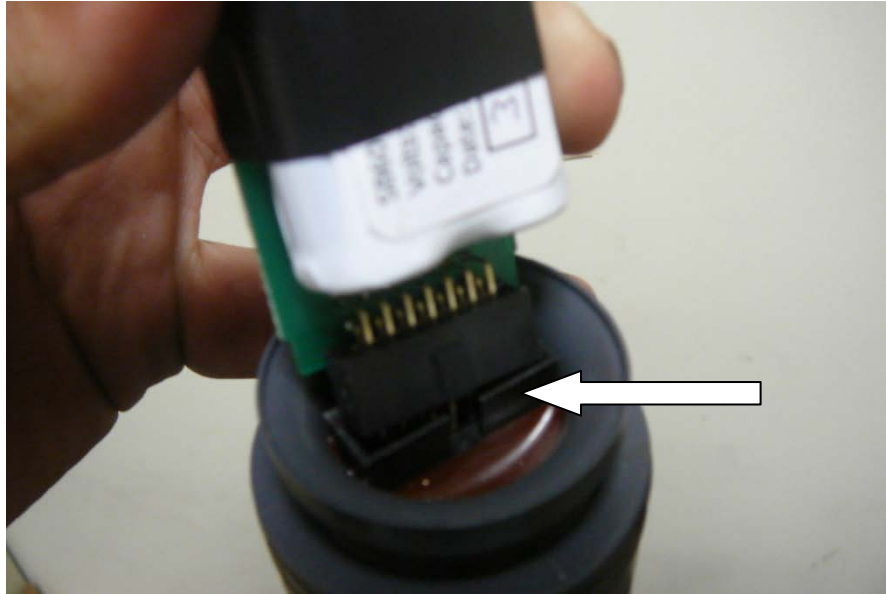
5. Place the new battery pack on the side opposite the board connection. Using electrical tape, attach the new battery pack to the board as shown.



6. Run wires over the top of the board and place in slot at top.



7. Carefully place circuit board back into probe. Be sure to line up notch in probe with the peg on circuit board.



8. Reconnect the battery and place cap back on probe and reinsert the small screw. When placing cap back on probe, be sure to place 2 silica packets next to the board. Also it helps to realign the screw holes in the cap and probe.

